



Sanghvi Movers Middle East Limited

*Wholly owned subsidiary of Sanghvi Movers Limited
(IC Index 2024)*



Company Overview



Founded
**November
03, 1989**



Headquartered
**Pune,
Maharashtra,
India.**



Listed on
**BSE & NSE
Since 1995**



SML FLEET (INDIA)

FLEET

450+

Tyre & Crawler
Cranes

CAPACITY

40-1600

Tons

STRENGTH

200+

Trailers & Hydraulic
Axle Lines

TONNE-METRES

13,43,446

SMME FLEET (MIDDLE EAST)

FLEET

150+

Tyre Mounted &
Crawler Cranes

CAPACITY

50 – 600 Tons

TONNE-METRES

22000+



Market Footprint

**World's 4th
& Asia's
Largest**

Globally Ranked
Crane Rental
Company
(IC Index 2024)

**10+ Diverse
Sectors**

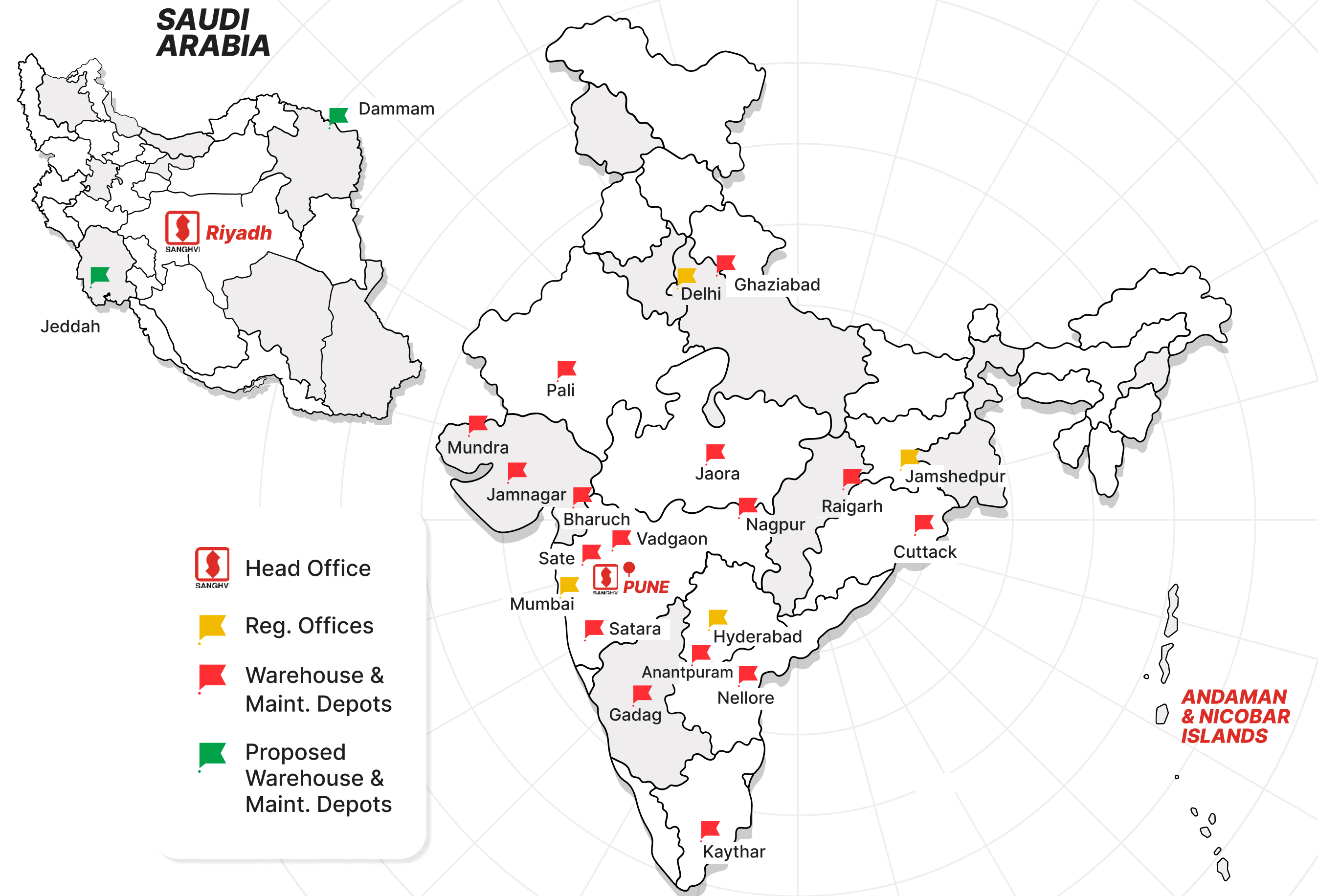
Strong presence in
construction and
energy sectors.

15 Depots
Across India

175 Acres
of Freehold Land
Dedicated to
Crane Parking

Depot in
Riyadh

Proposed Depot in
Dammam



Core Strengths

Sanghvi Movers Ltd. (SML) was incorporated on November 3, 1989 and headquartered in Pune, is India's largest crane rental company. With a fleet of 450+ cranes, Axle Line and Trailers (40–1600 tons), SML serves industries like wind, steel, cement, refineries, and infrastructure. It also offers EPC project management, manpower, and heavy equipment erection services.



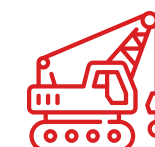
35+ Years of Experience



15+ Depots



Diversified Fleet



Heavy Lift Solutions



Trained & Skilled manpower



Crane rental to EPC solution



Customized Packages



Efficient & Timely Deployment



Safety Track Records



Periodical Maintenance Service



SANGHVI

www.sanghvicranes.com

▪ World's Fourth Largest Lifting Solutions Company

\$270 Mn
+ Market Capitalization

\$70 Mn
+ Capex Last 36 Months

\$350 Mn
+ Investment in Cranes

450+
+ Tyre and Crawler Cranes



■ The Visionaries Behind Our Journey



Late

**Mr. Chandrakant
P. Sanghvi**

Founder & Ex-Chairman ”

Mr. Chandrakant P. Sanghvi was the visionary Chairman & Managing Director of Sanghvi Movers Limited (SML), having identified a significant gap in the crane rental industry. He is regarded as a pioneer in the crane rental sector in India, recognizing not only the potential of the crane business but also the need for heavy-duty cranes to support the rapid development of infrastructure across the country.



**Mr. Rishi C.
Sanghvi**

Managing Director ”
(Since 2019)

Rishi holds a Master of Business Administration from Cornell University, New York, U.S.A., and a Bachelor of Science in Mechanical Engineering with a Minor in Economics from Rensselaer Polytechnic Institute, Troy, New York, U.S.A. He leads the organization's growth, sales analytics, strategy, and technology advancement, while passionately carrying forward his father's legacy. With a global outlook, he is committed to expanding the business in key areas such as Environment, Labor, Safety, Sustainability, and Infrastructure Investment.

▪ Leadership Team – India



Gaurang Desai
Chief Executive Officer



Sham Kajale
Chief Financial Officer



Akshay Pore
Chief Strategy Officer

▪ Leadership Team – Saudi Arabia



Mohammed Almanaseer
Managing Director



Ahmed Elsaeed
Operations Head

■ About Us

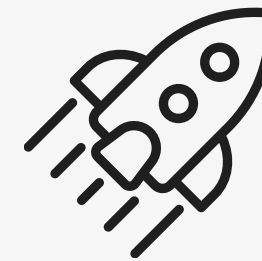
We strive to delight our customers and exceed their expectations through timely delivery of reliable cranes, well-trained manpower, uncompromising safety standards, and prompt service.

Vision



Delight the world through sustainable and scalable engineering solutions.

Mission



Accelerate infrastructure development by delivering simple, technology-driven and innovative solutions to create maximum value for our stakeholders.

www.sanghvicranes.com

Values



Human Dignity

Ethics

Agility

Trust

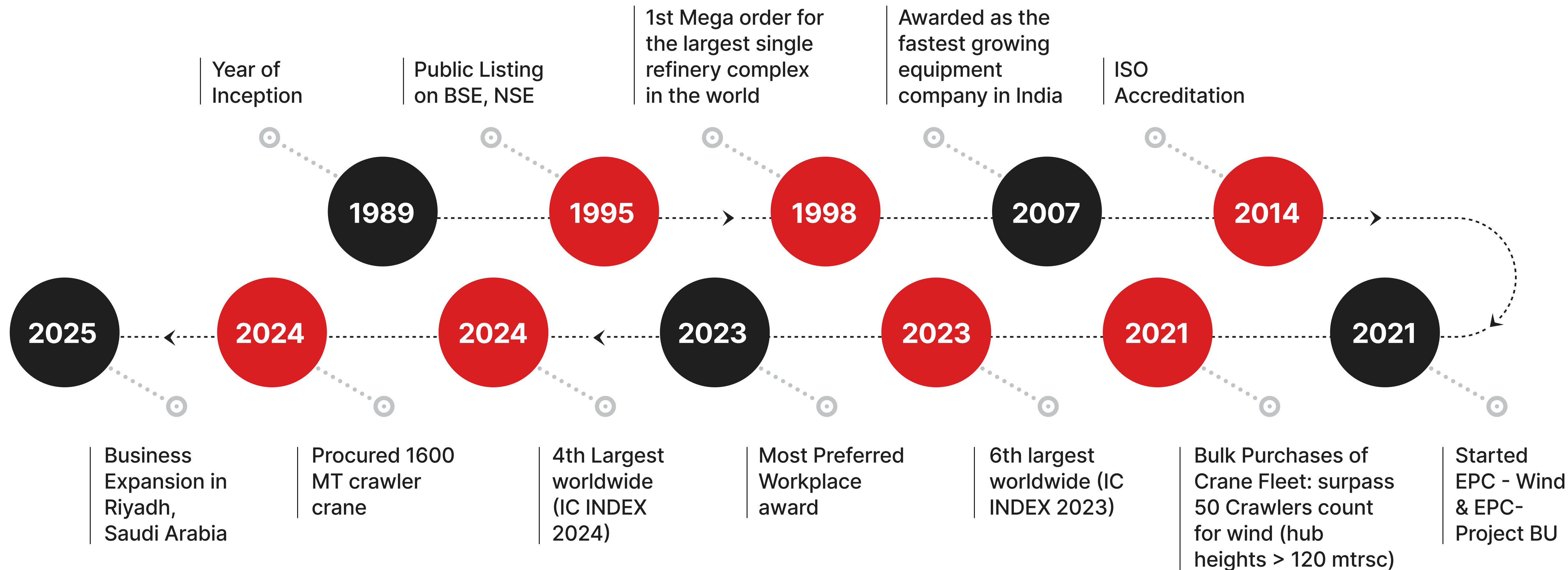
Courage

Ownership



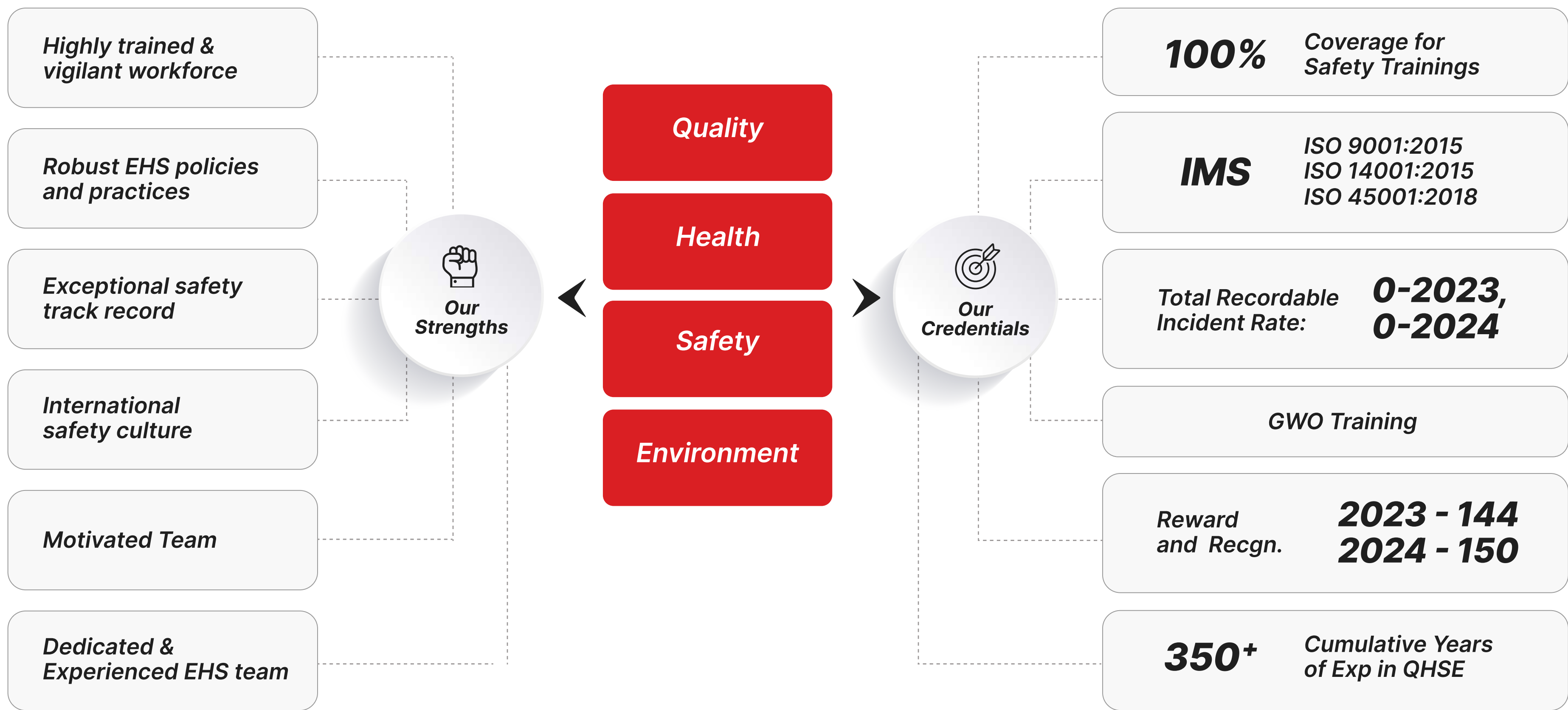
SANGHVI

Our Journey



QHSE – Our Strong Pillars

At SML, we prioritize a culture of safety, quality, and environmental responsibility. Our goal is zero accidents through rigorous standards and a robust QHSE framework. We strive to earn and maintain our customers' trust through consistent, transparent practices.



Industries ***We empower***

With one of the largest and most advanced fleets of cranes, we empower industries across infrastructure, power, oil & gas, steel, cement, petrochemicals, and metro rail.



SANGHVI

www.sanghvicranes.com



Infrastructure Stadium



Infrastructure Airports



Infrastructure Metro



Infrastructure Bridge & Roadways



Oil and Gas



Steel Sector



Wind Energy



Cement Sector

Case Studies.

Driven by experience and innovation, we bring scalable lifting capabilities to mission-critical infrastructure projects.



SANGHVI

www.sanghvicranes.com

CASE STUDY

■ Sports Stadium Erection



KEY CHALLENGES

- » Optimal crane selection and configuration for varied and complex lifting needs
- » Severe space constraints with multiple equipment operators working simultaneously
- » Elevated risk to personnel and equipment due to overlapping activities



SML SOLUTION

- » Conducted detailed lift engineering and rigging optimization to minimize obstruction and maximize operational safety
- » Deployed cranes with advanced control systems ensuring millimeter-level accuracy in component erection
- » Integrated QHSE protocols to mitigate risks in high-density working zones
- » Maintained stringent adherence to project timelines through planned crane mobilization and demobilization
- » Ensured compliance with global safety benchmarks including ISO & client-specific standards



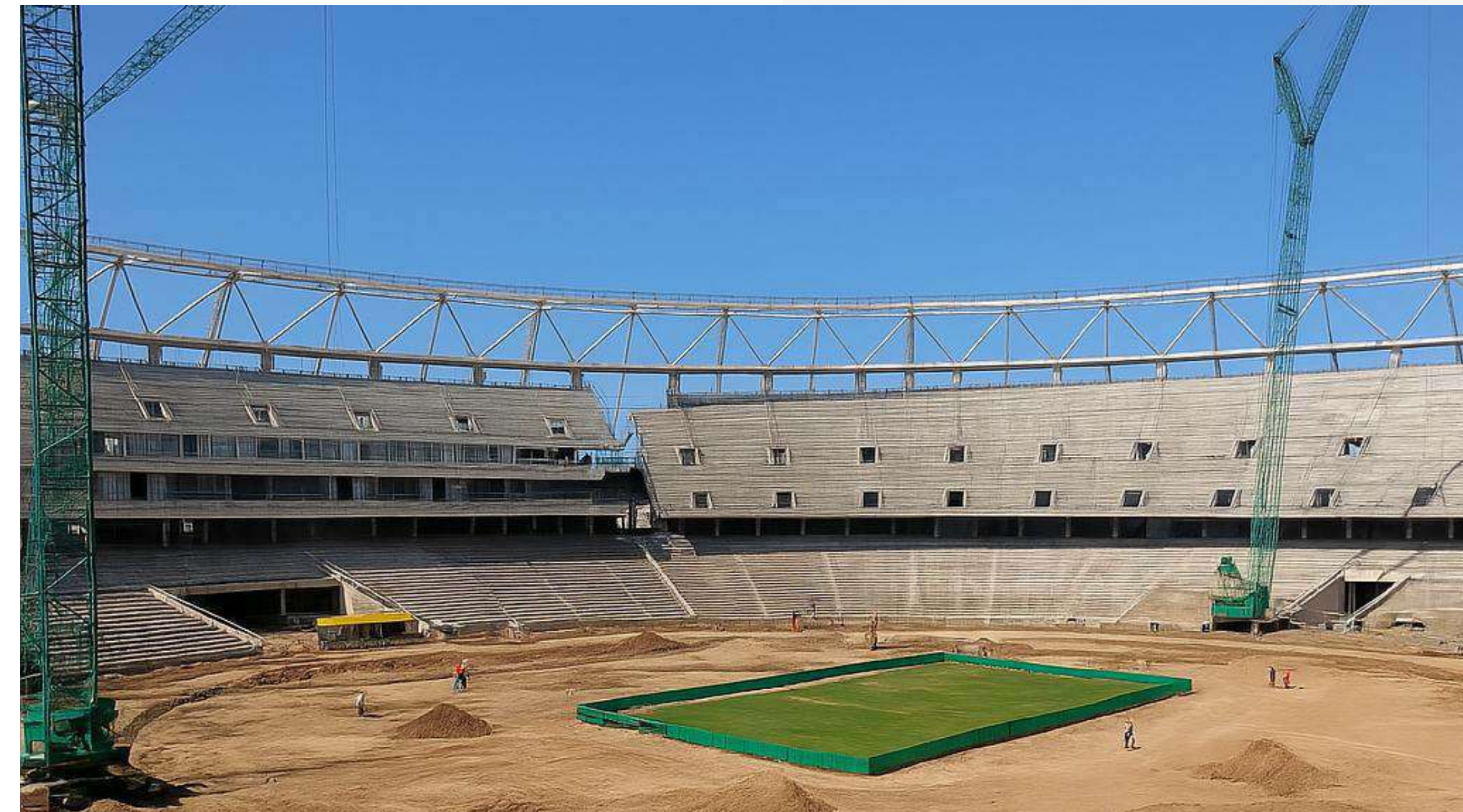
IMPACT

- » Project delivered within stipulated timeframes
- » Achieved zero incidents and full safety compliance
- » 100% crane uptime and uninterrupted execution with no mechanical failures

NARENDRA MODI CRICKET STADIUM

OVERVIEW

Construction of one of the world's largest cricket stadiums required the precise erection of structural components within stringent timelines, under complex space and operational constraints.



CASE STUDY

■ Airport Expansion Projects Multiple Locations



KEY CHALLENGES

- » Deployment of cranes compliant with specified age and technology standards
- » Execution without disrupting existing passenger and cargo movement or air traffic control protocols
- » Timely and efficient execution of critical lifts including TBM assembly
- » Full regulatory compliance with minimal traffic and civic disruption



SML SOLUTION

- » Deployed latest-generation cranes meeting regulatory age and specification mandates
- » Executed detailed site surveys and lift planning from mobilization to handover
- » Implemented full QSHE framework with dedicated airside safety marshals and spotters
- » Scheduled lifts during non-peak hours to prevent operational disruptions
- » Assigned trained manpower with proven airside project credentials



IMPACT

- » Seamless execution with zero interference to airport operations
- » No equipment downtime or damage
- » On-time project milestones met under full regulatory and safety compliance

OVERVIEW

Execution of heavy lifting operations during airport expansion projects demanded seamless integration with ongoing airside operations, stringent safety compliance, and minimal public disruption.



CASE STUDY

■ Metro Infrastructure Projects India



KEY CHALLENGES

- » Simultaneous deployment of multiple cranes in confined and dynamic environments
- » Enforcement of crane age regulations by government authorities
- » Execution without impacting routine vehicular and pedestrian movement
- » Critical lifting tasks including unloading and assembly of Tunnel Boring Machines (TBMs)



SML SOLUTION

- » Mobilized a fleet of advanced crawler and mobile cranes with high lifting precision and safety features
- » Offered end-to-end EPC logistics solutions including last-mile delivery and on-site erection of segments (girders, viaducts, TBMs)
- » Applied lift engineering techniques ensuring synchronized and interference-free operations
- » Deployed specialized teams for high-risk TBM assembly operations with remote monitoring capability

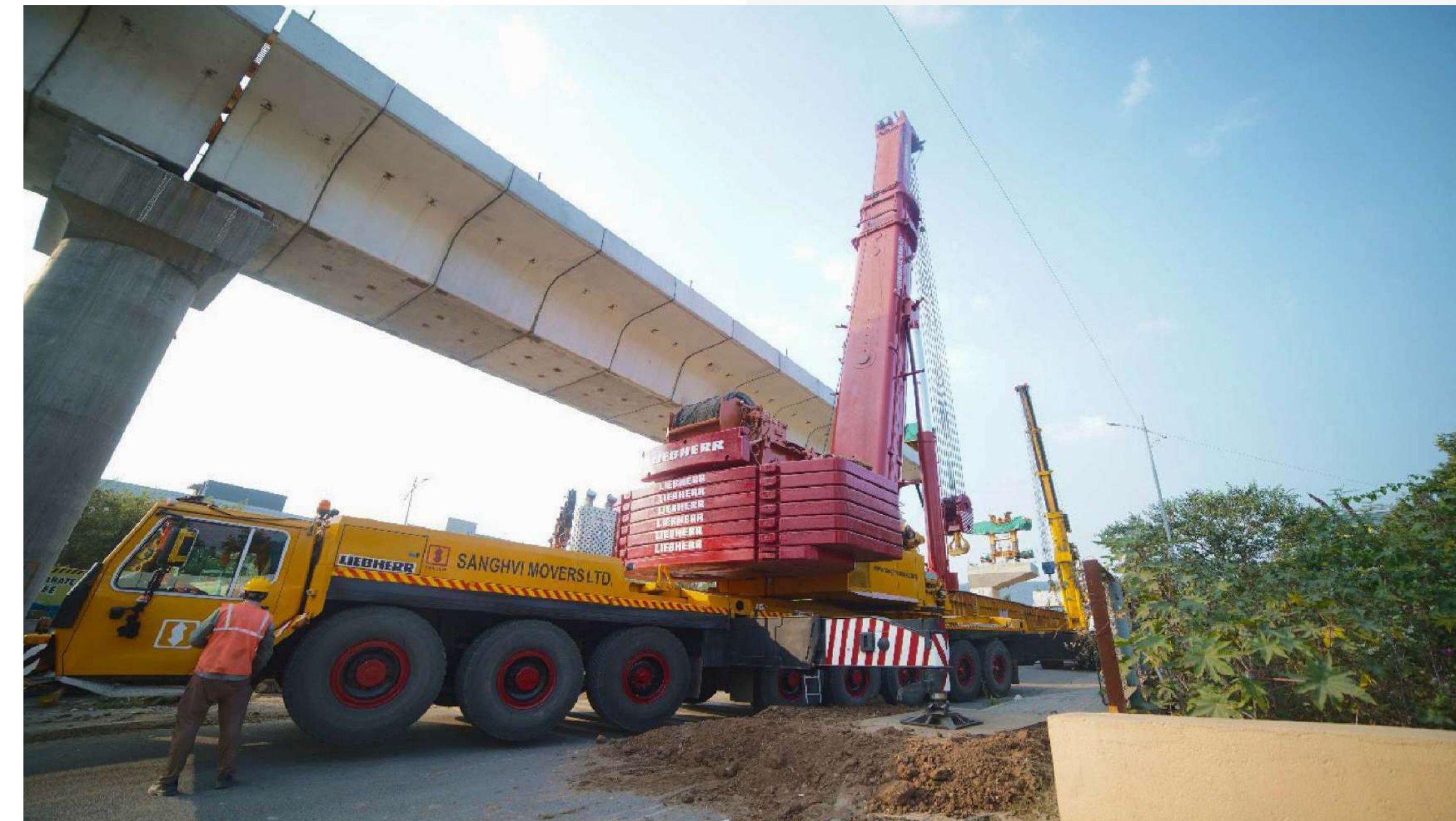


IMPACT

- » Zero downtime of deployed equipment due to predictive maintenance and advanced telemetry
- » Timely and efficient execution of critical lifts including TBM assembly
- » Full regulatory compliance with minimal traffic and civic disruption

OVERVIEW

Metro rail infrastructure projects required high-capacity lifts in congested urban environments while ensuring uninterrupted city traffic flow and meeting stringent safety and equipment regulations.



CASE STUDY

■ Infrastructure – Bridges and Roadways

ROB Installations under Live Tracks & Roads



OVERVIEW

Over-bridge installations require clockwork precision and risk mitigation under active public transport zones.



KEY CHALLENGES

- » Safety compliance during night/traffic blocks
- » Rapid lift, placement, and removal cycles
- » Government coordination for clearances



SML SOLUTION

- » Use of rapidly deployable cranes
- » Modular lift planning with minimal onsite rigging
- » Round-the-clock execution teams



IMPACT

- » Minimal public disruption
- » Fast, accurate execution
- » Regulatory and safety compliance met fully



SANGHVI

CASE STUDY

■ Refineries, Oil & Gas Construction & Expansion

Reactor & Column Erection in Live Refinery



KEY CHALLENGES

- » Sensitive and high risk operating zones
- » Lift Planning and execution in confined space
- » Compliance with global EHS standards



SML SOLUTION

- » Engineered lifting studies and zone-specific rigging plans
- » Customized safety solutions with global QHSE Standards and trained teams
- » Use of optimum cranes for precise positioning



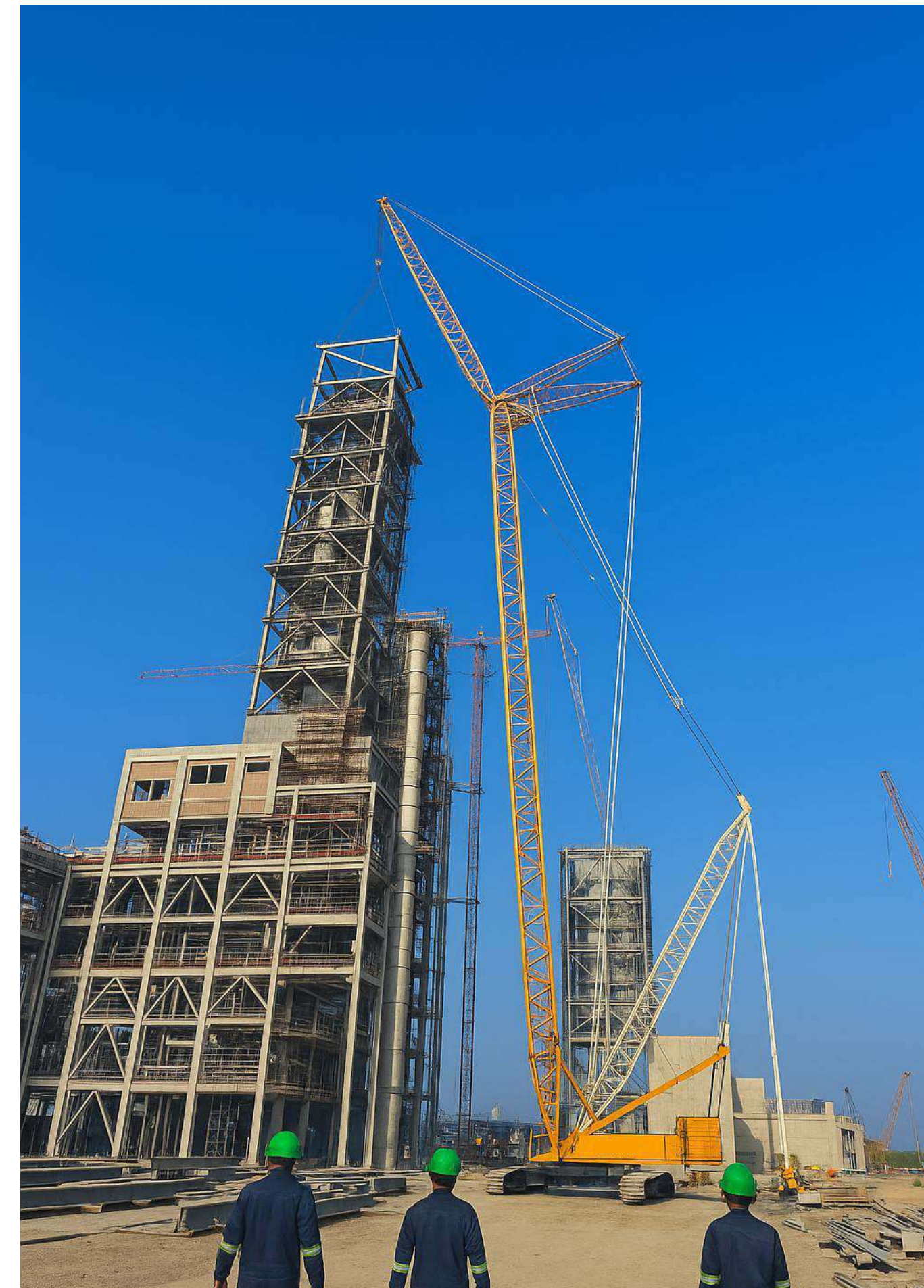
IMPACT

- » Zero incidents, full safety compliance
- » Downtime reduction
- » Precision execution in confined hazardous zones



SANGHVI

www.sanghvicranes.com



IndianOil

OVERVIEW

Refinery and oil & gas projects require lifting ultra-heavy modules under stringent safety and environmental norms

CASE STUDY

■ Steel Manufacturing (Boiler/Furnace Erection)

Furnace & Boiler Erection during Brownfield Expansions



KEY CHALLENGES

- » Access constraints in congested zones
- » Erection of massive boiler and furnace parts
- » Live site risks



SML SOLUTION

- » 400–1000 MT crawler cranes deployed
- » 3D lift simulation and congestion-aware planning
- » Plant safety and continuity ensured

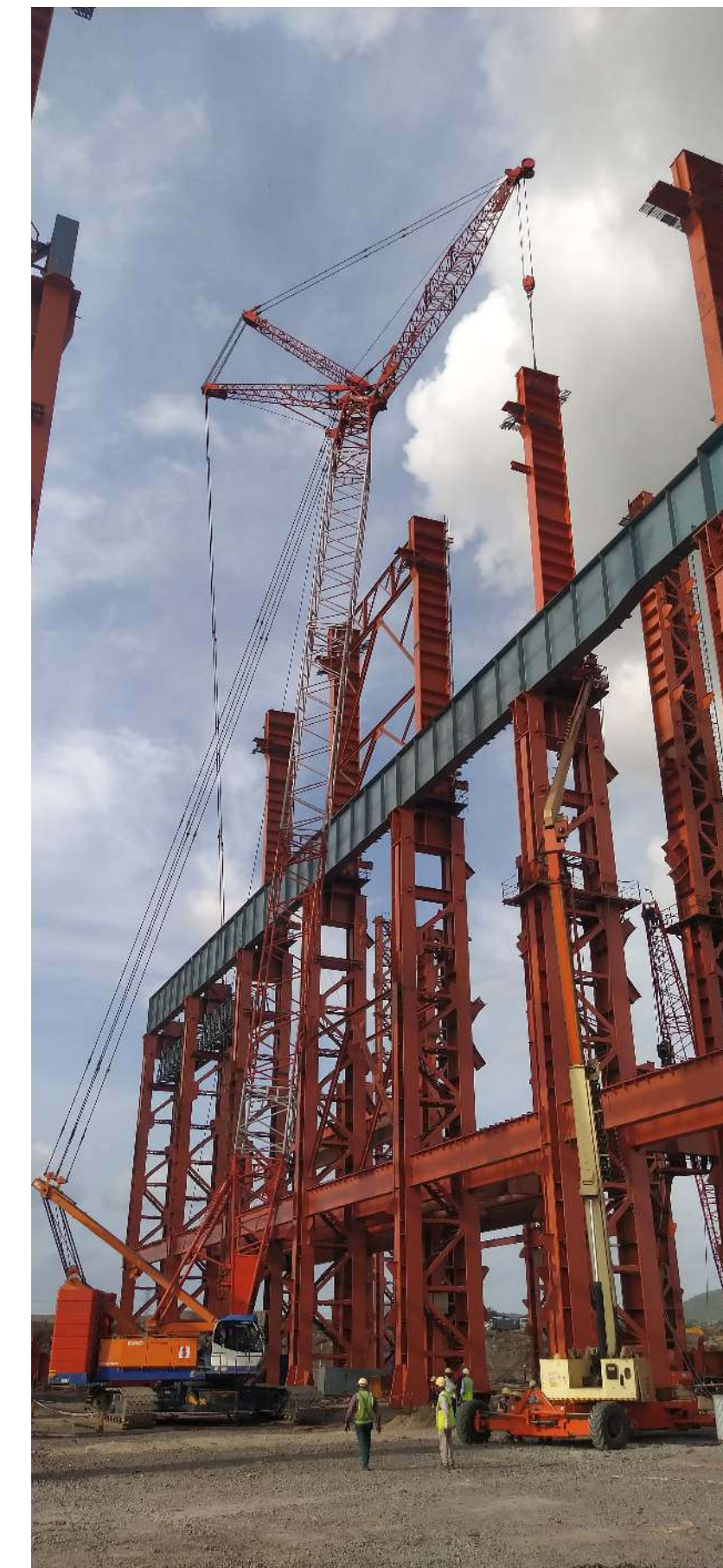


IMPACT

- » Seamless integration with running operations
- » On-time delivery
- » Safe, controlled lifting in high-risk areas



SANGHVI



TATA STEEL

JINDAL
STEEL & POWER

JSW

OVERVIEW

Steel plant expansions require critical heavy lifting without interrupting live plant operations.

CASE STUDY

■ Cement Plant Construction & Expansion

Silo, Kiln & Preheater Erection

UltraTech
CEMENT
The Engineer's Choice

OVERVIEW

Construction and expansion of cement plants involve precision lifting in tight, elevated zones under dynamic weather conditions.



KEY CHALLENGES

- » Lifting prefabricated units in confined areas with crane operations beyond sights
- » Long reach boom configuration prone to gusty & cyclonic wind conditioning



SML SOLUTION

- » Customized crane configurations and lift engineering
- » Global QHSE Standards monitoring and weather-based planning
- » Stability ensured via ground consolidation measures



IMPACT

- » Optimized lift performance by reducing additional number of lifts
- » Reduced manual handling
- » Smooth, on-schedule commissioning



CASE STUDY

■ Power Plant & Boiler Erection

Boiler & Structural Erection using LR 1800



KEY CHALLENGES

- » Limited manoeuvring space and challenging ground conditions
- » Lifting massive W Beans, girders, silencer roof structures
- » Concurrent parallel site activities increasing safety risks



SML SOLUTION

- » Detailed feasibility studies for load, reach, and ground conditions
- » Deployment of high-capacity crawler cranes with luffing booms by evaluating space availability & required ground conditioning
- » Rigging minimized during construction to fast-track schedules



IMPACT

- » Safe, streamlined operations
- » Faster erection cycles
- » Zero disruption to concurrent site activities



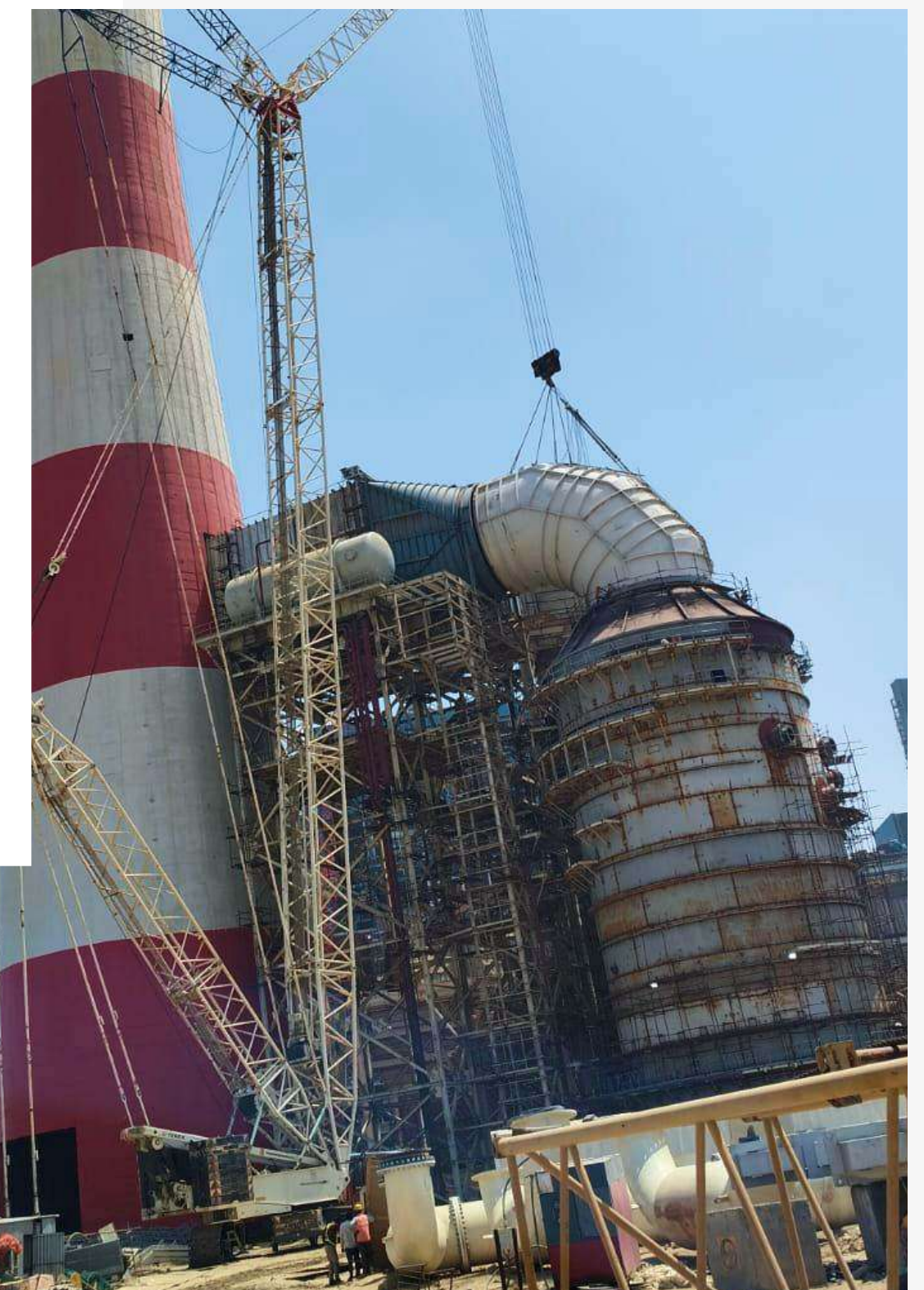
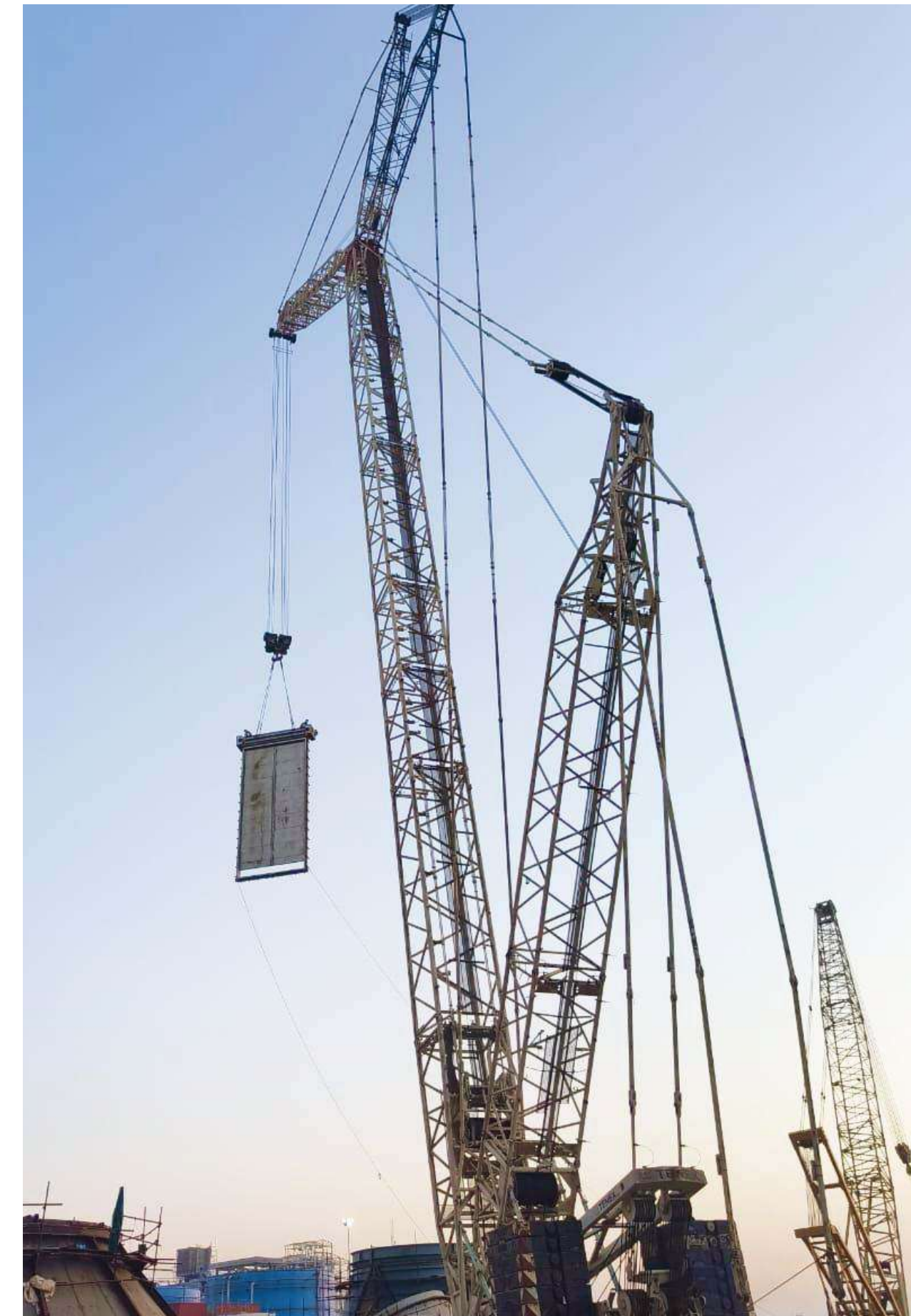
SANGHVI

www.sanghvicranes.com



OVERVIEW

Boiler erection at power plants demands precision lifting of heavy assemblies like drums and headers in confined, live environments.



■ Certifications & Accolades



Business Excellence Award 2024
Engineering Excellence Award 2022



Business Excellence Award 2023



Most Preferred Work Place 2024



Rising Star Performer of HSE



Best Safety Performance Awards 2024



Energy Leadership Awards 2024
(Employee Safety Award)



**GLOBAL WIND
ORGANISATION**

***SML is Certified
Training Provider***



***Integrated
Management Systems***



***ISO 9001:2015
ISO 14001:2015
ISO 45001:2018***

Trusted by Industry Leaders

Renewable Energy (Wind)

SUZLON

ReNew
POWER

adani
Renewables

SIEMENS Gamesa
RENEWABLE ENERGY

VIBRANT
ENERGY



ENVISION

semcorp

SENVION
wind energy solutions

Vestas

AYANA

CONTINUUM
ENERGY

Refinery & Petrochemicals

THERMAX

बी एण्ड आर
BANDR
Building Nation Since 1951

NAYARA
ENERGY

HMEL

thyssenkrupp

Bharat
Petrochem

ISGEC

गैल
GAIL

TOYO
ENGINEERING

भारत
भारत

IndianOil

Maire
Tecnimont

ador
peace of mind

Steel & Industrial Sector

TATA STEEL

JINDAL
STEEL & POWER

JSW

SHYAM
METALICS
ORE TO METAL

सेल SAIL

Infra

L&T Construction
Buildings & Factories

Patel
Since 1949

KEC
KEC INTERNATIONAL LIMITED

NCC

Shapoorji Pallonji

JMC PROJECTS (INDIA) LIMITED
(A Rajgopal Group Enterprise)

AFCONS

TATA PROJECTS
Simplify.Create

Cement Sector

Ambuja
Cement

RAMCO
SUPERGRACE
As strong as family bonds.

UltraTech
CEMENT
The Engineer's Choice

adani
Cement

Dalmia
Bharat

Cem
Commitment, Reliability & Quality

Shree
Cement

Other Sectors

SR RUNGTA
GROUP

बी एच ई एल
BHEL

एनपीसी
NPCL
एनपीसी ग्रुप लिमिटेड
एनपीसी ग्रुप लिमिटेड

GNFC

एनपीसी
NPCL

एनपीसी
NPCL

EIL
A Navratna Company

Power

बी एच ई एल
BHEL

एनटीपीसी
NTPC

L&T Energy
Power

TATA POWER

Our Fleet.

At the forefront of India's heavy-lift sector, we deliver custom-engineered lifting solutions tailored to project-specific requirements.

■ Built to Lift. Trusted to Deliver.

From rapid-deploy tyre mounted cranes to high-capacity crawler cranes, we deliver total lifting assurance across scale, terrain, and timelines.

Scale at a Glance

- » **450⁺** Cranes
- » **40-1600 MT** Capacity
- » **95⁺** Trailers
- » **64** Axle-Line Units — first-of-its-kind multi-line import in Asia

Competitive Edge

- » In-house trailers and axle lines eliminate third-party bottlenecks.
- » Pan-India Depot Network ensures 24/7 mobilization.
- » Over Three Decades of Experience in high-stakes lifting operations.

Global OEM Bench

DEMAG

TEREX®

LIEBHERR

SANY

KOBELCO

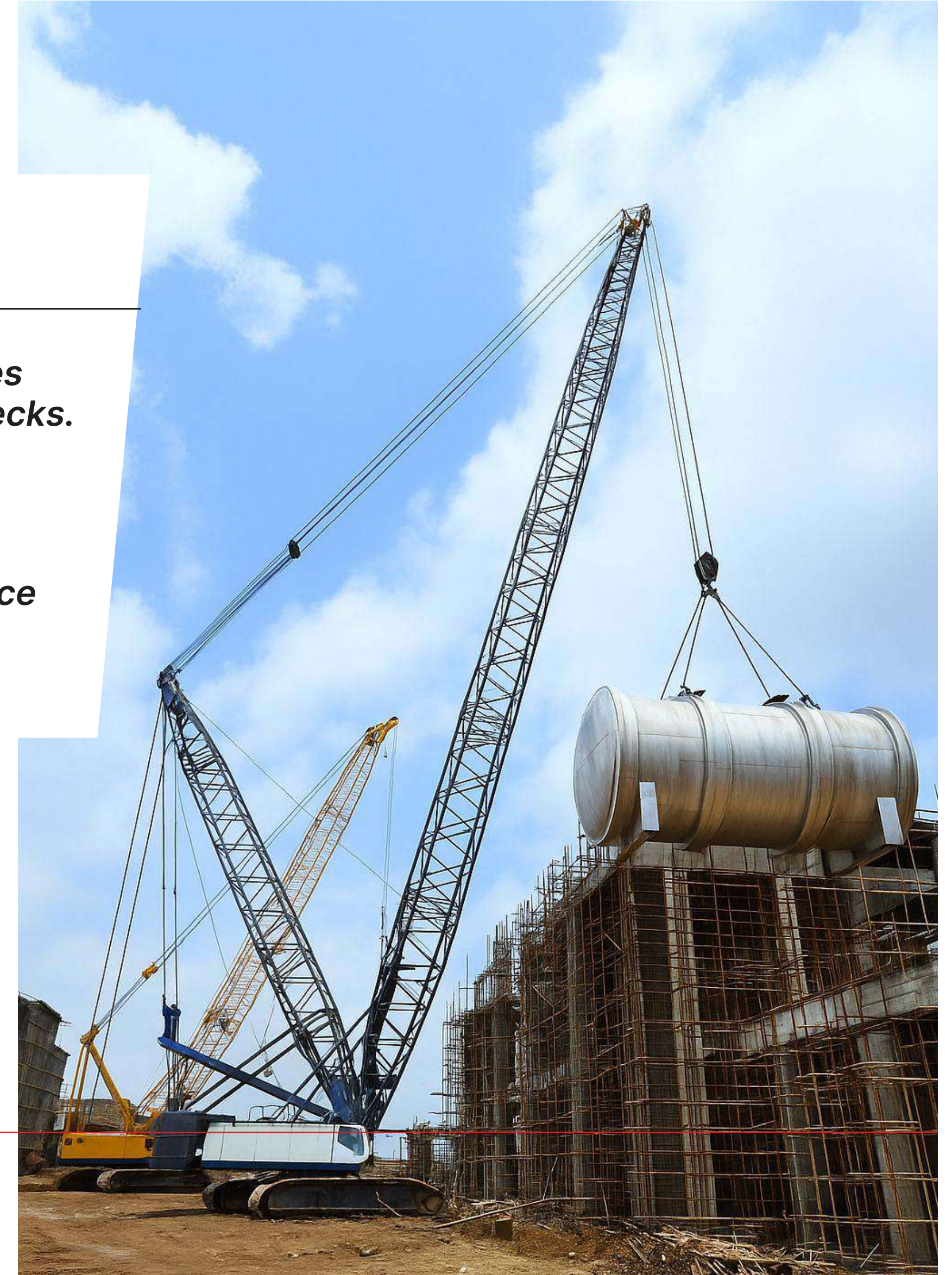
XCMG

GROVE®

Manitowoc



www.sanghvicranes.com



Tyre Mounted Cranes

Road - Legal Mobility

Global standard for swift, time - critical lifts - any terrain.

Versatile Attachments

Attachments like Jibs, Counterweights, Luffing Axle attachment as needed.

| Capacity (MT) |
|---------------|
| 0 - 50 |
| 60 - 110 |
| 120 - 150 |
| 160 - 200 |
| 220 - 500 |

Demag / Terex

Proven hydraulic booms for fast rig-up.

On-Call OEM Technicians

Certified experts deliver preventive service.





■ Crawler Mounted Cranes

» *Off-Road Traction Mobility*

Tracks conquer sand, clay & gradients the crawler crane marches with a load.

» *Largest 70-1600 MT Crawler Fleet - 203 Units*

India's biggest heavy-lift inventory ensures instant availability for wind, petro-chem, and mega-infra jobs.

» *World-Class Lattice-Boom Engineering*

Our fleet machines are sourced from leading OEMs Demag, Liebherr, Manitowoc deliver max 160 m tip heights with rapid super-lift assembly.



» *Embedded Super-Lift Crew*

Factory-Trained riggers and OEM Engineers on-site 24 / 7 to maximize uptime



Capacity (MT)

70 - 200

250 - 300

350 - 400

400 - 500

500 - 600

650 - 1000

1600



SANGHVI

www.sanghvicranes.com



Our ***EPC*** ***Solutions***

We provide end-to-end turnkey solutions across engineering, infrastructure, procurement, installation, and commissioning - serving as a single-window partner from design to delivery.



SANGHVI

www.sanghvicranes.com

■ Turnkey Solutions in Wind EPC

From Right-of-Way to Grid Energization Under a Single Contract

Undisputed Scale. Proven Execution

10 GW

Wind Turbine
Installations

20+ Yrs

Driving in
Green Energy
Revolution

End-to-End Scope - One Contract, Zero Interfaces

» **Land, Permits & Approvals**

- Land Acquisition and Related Services
- ROW Management

» **Civil BOP**

- Geo-technical Investigation & Foundations including Re-engineering Services
- Crane Pad, Hard Stand, Boom Assembly Area Development
- Internal and External Pathways
- Storage Yard Development

» **Mechanical BOP**

- Cranes
- Inter-carting Services
- Installation and Erection Services
- Yard / Zero Point Management to Maintenance

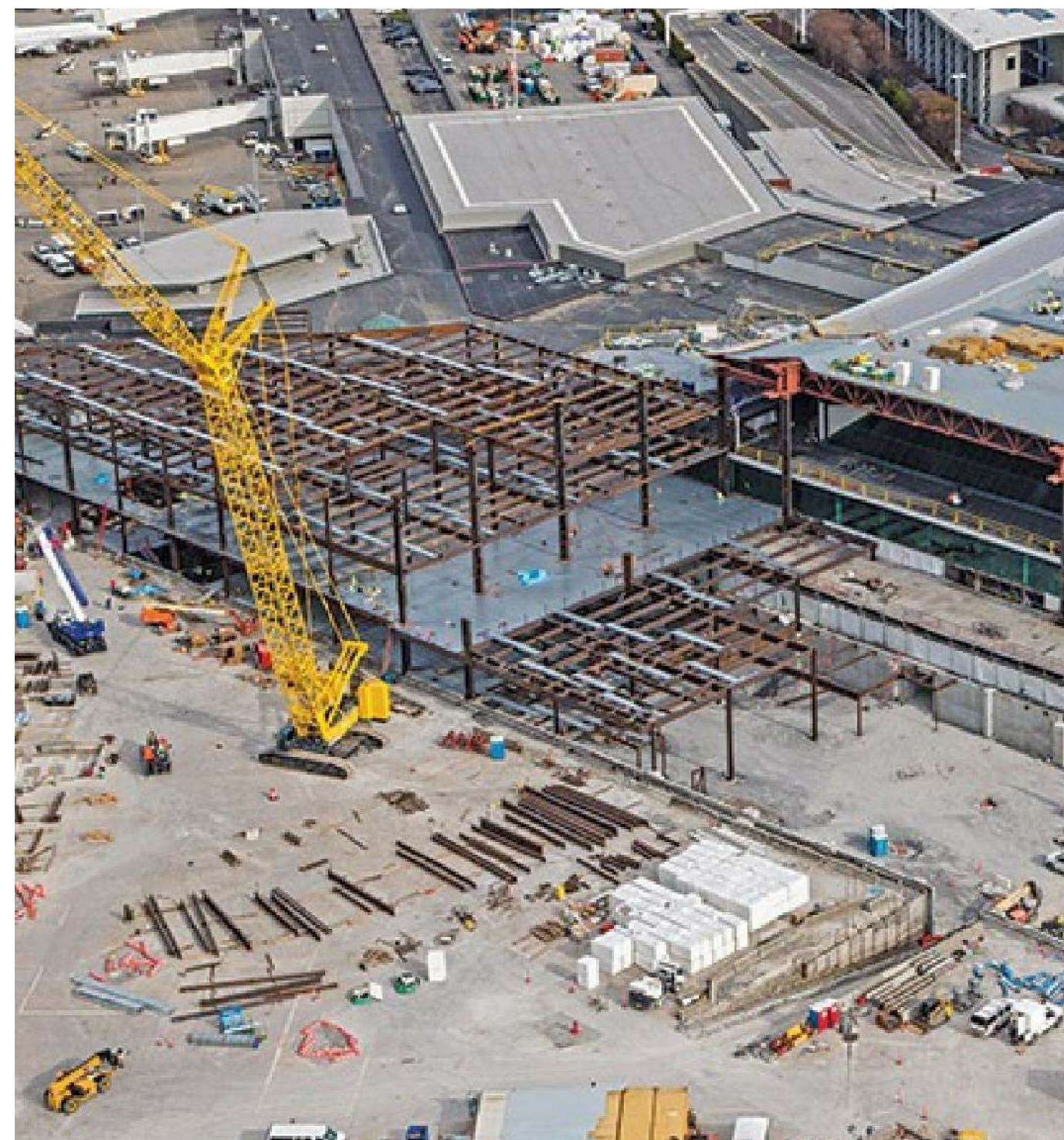
» **Security at Yard and Locations**

» **Surface Logistics Services**

» **Electrical BOP**

- Internal and External Overhead Lines
- 33/66/110/220/400 KV
- USS, PSS Designing and Construction
- SCADA Work





■ EPC Project Solutions

From Engineering to Commissioning
— One Reliable Partner

We provide end-to-end EPC solutions across engineering, procurement, construction, installation, and commissioning, delivering turnkey execution for critical industrial infrastructure.

Project Highlights

» Heaviest Equipment Erected

- Product Splitter – GAIL, Usar (1605 MT)

» Volume of Execution

- Over 50000 MT of equipment and structure erected across refineries, petrochemical, power plants, Steel, cement, Infrastructure, Roads and Railways, wind energy sites
- 10000+ major equipment lifted and installed successfully

» Composite EPC Jobs Delivered

- Integrated Civil, Mechanical, Electrical & Instrumentation (CMEI) services under one contract
- Seamless coordination between disciplines for timely commissioning

Scope of EPC Works

» Equipment

- Erection of Static & Rotary Equipment
- Precision Alignment & Grouting
- Rigging and Commissioning Support

» Structure

- Structural Fabrication & Pre-Assembly
- Surface Preparation (Blasting & Painting)
- Erection & Structural Integration

Piping

- Onsite Spool Fabrication & Welding
- NDT-Compliant Erection
- Painting, Testing, and QA/QC Documentation

Our Distinct Advantage

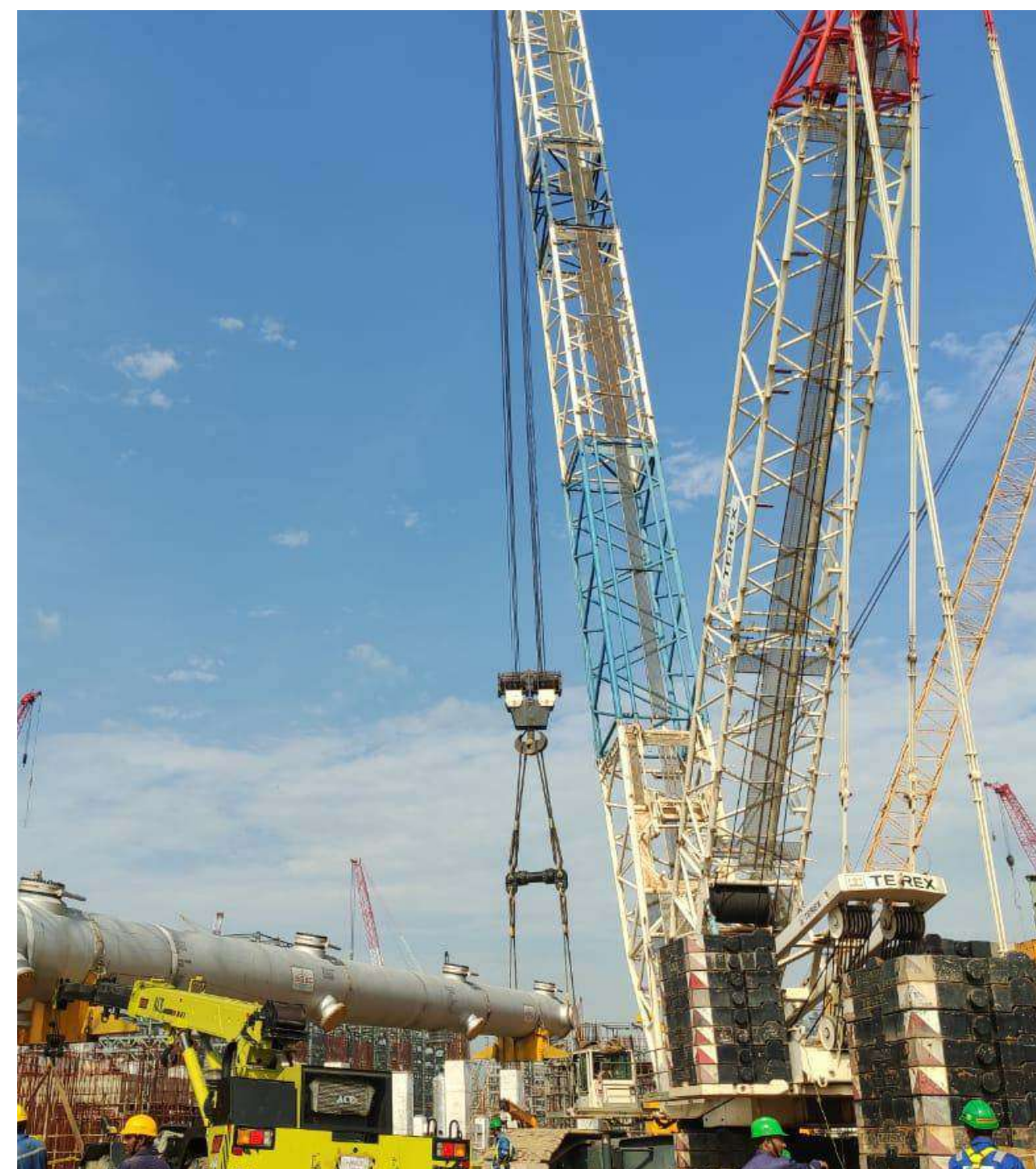
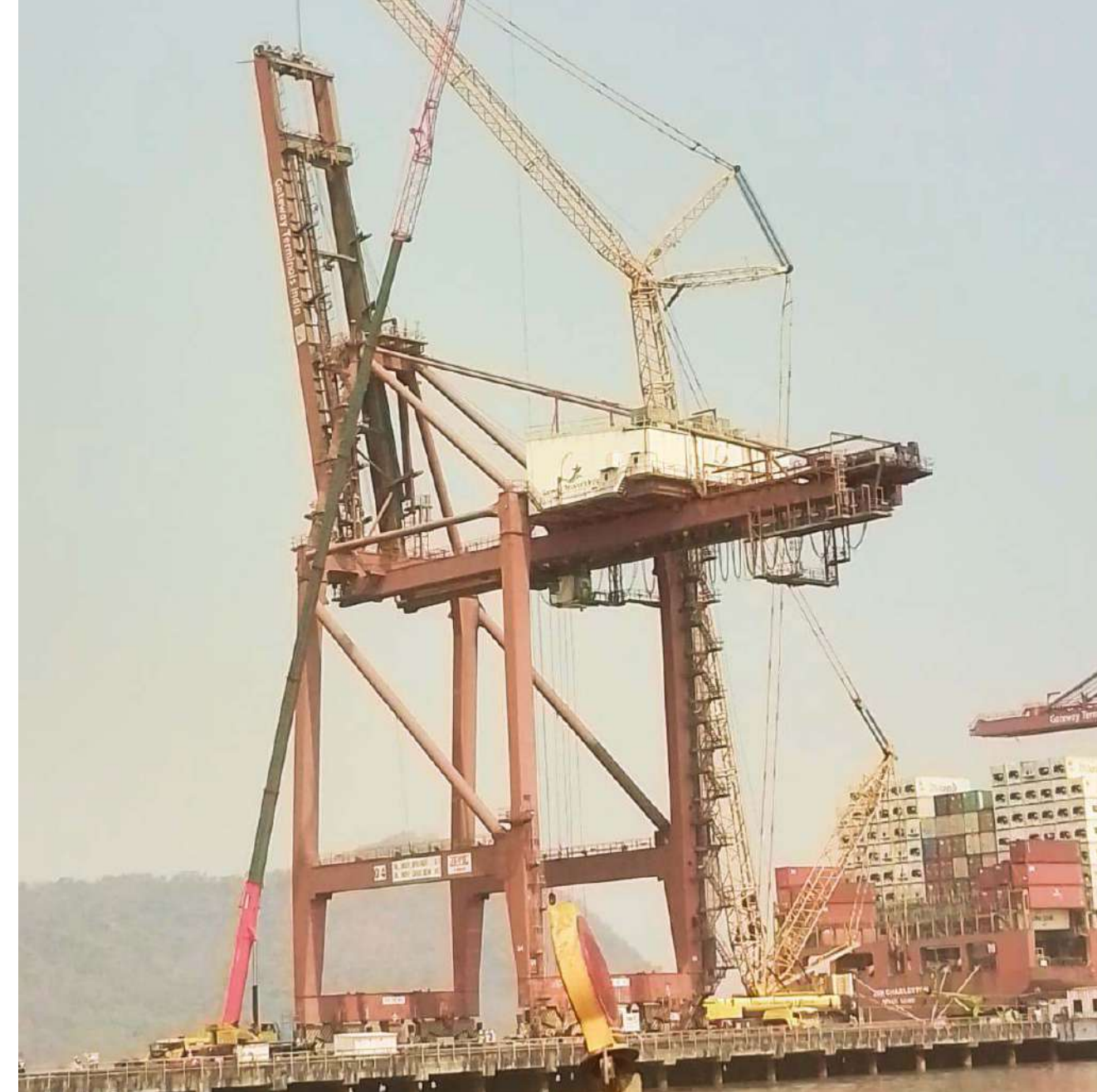
» 450+ Cranes with 1600 MT capacity for high-tonnage lifts

» Zero TRIR Safety Record
ISO 9001:2015
ISO 14001:2015
ISO 45001:2018

» Proven expertise in live site operations under stringent safety norms

» End-to-End delivery with single - point accountability





SANGHVI



Thank
» you
www.sanghvicranes.com

 **Sales**
enquiry@sanghvicranes.com
